



INGA IN1B-L  
black coated  
859 x 91 mm

INGA IN1SS - L  
polished stainless steel  
859 x 91 mm



TIMER function

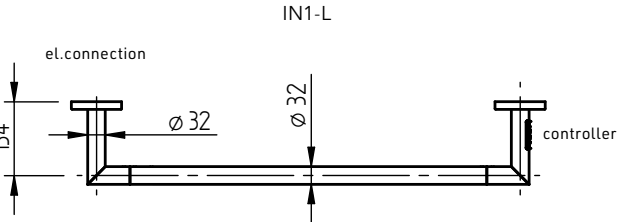
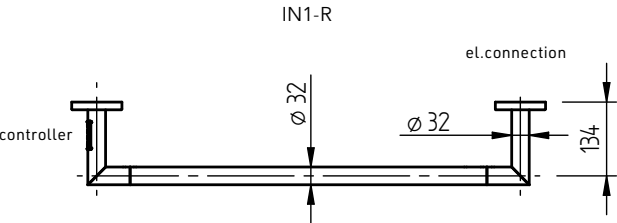
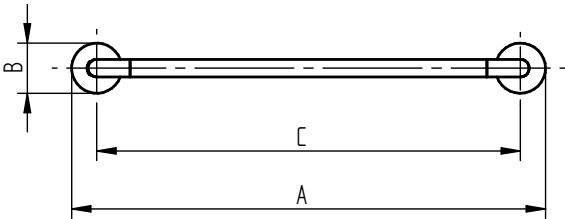


Function 2 h - the dryer will heat for 2 hours, then it will automatically turn off.

Function 4 h - the dryer will heat for 4 hours, then it will automatically turn off.

ON/OFF  
The green LED indicates that the dryer is ON.

In case of installing three electric dryers side by side / above each other, it is possible to buy a set with a hidden built-in frame for connection. More information can be found on our website [www.pmh-co.cz](http://www.pmh-co.cz)



INGA	Black coated	Polished stainless steel	Width (A) x Height (B) [mm]	C	Hidden connection	Weight [kg]	HO [W]	Degree of protection
right	IN1B-R	IN1SS-R	859 x 91	768	✓	1,2	17	IP44
left	IN1B-L	IN1SS-L	859 x 91	768	✓	1,2	17	IP44

Right / left variants depending on the side of the electrical connection. If the electrical connection is on the right, the controller is on the left = right-hand variant IN1-R, and conversely.